

Catalogue

Brief 2

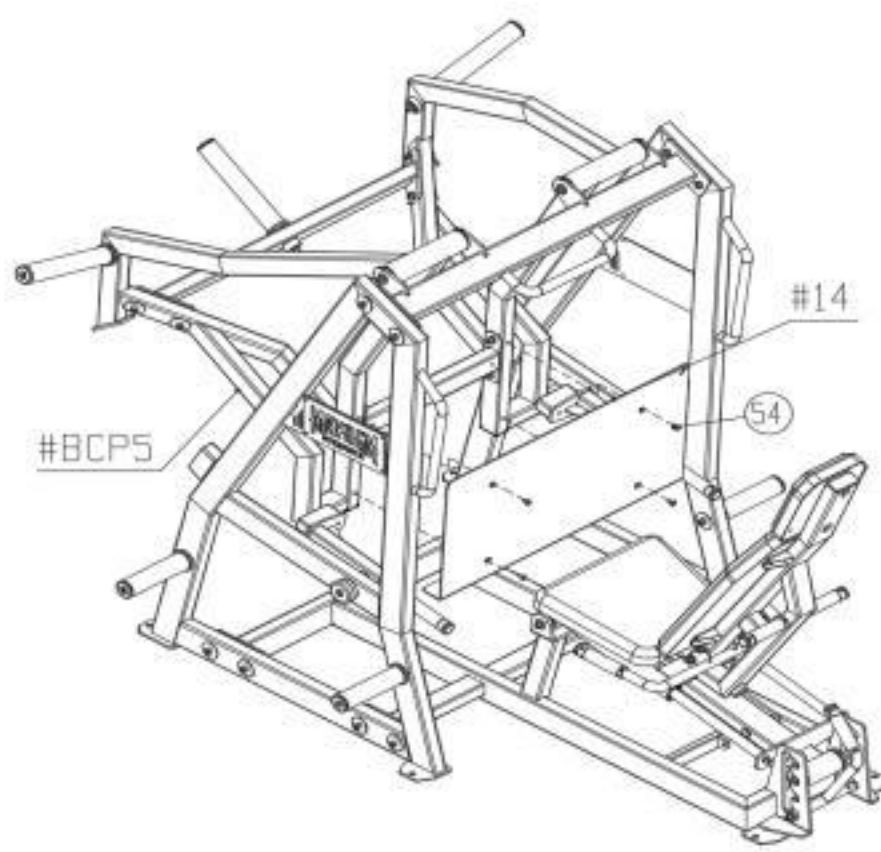
Installation 3

Accessories List 5

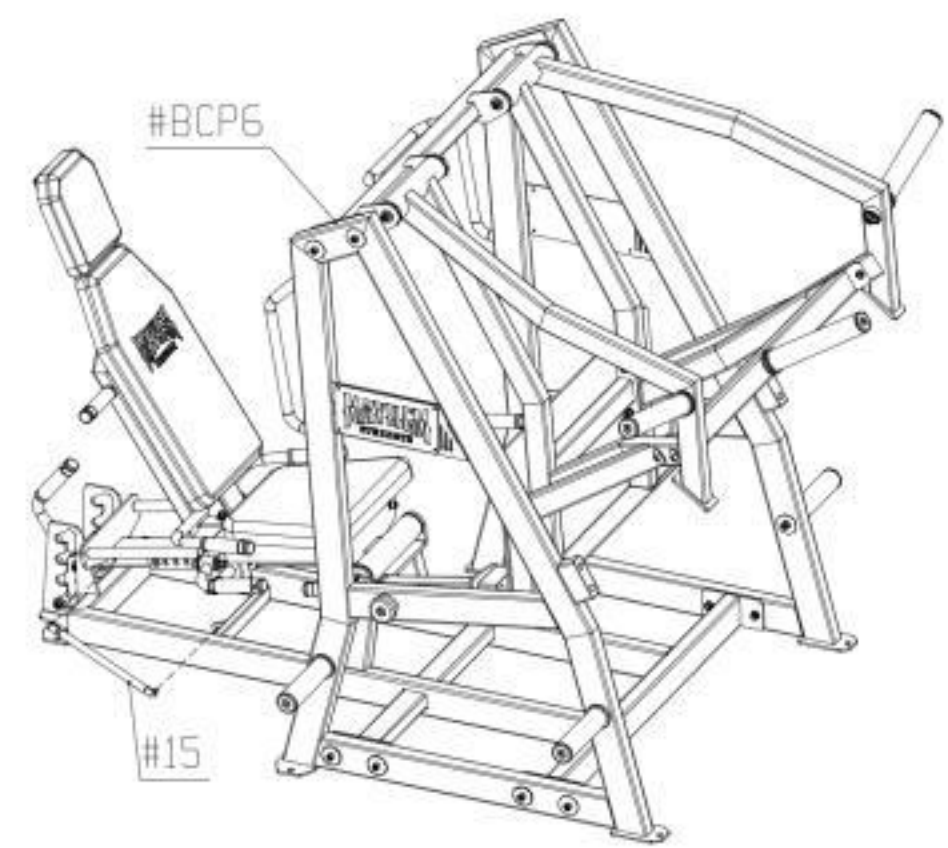
-1-

Installation

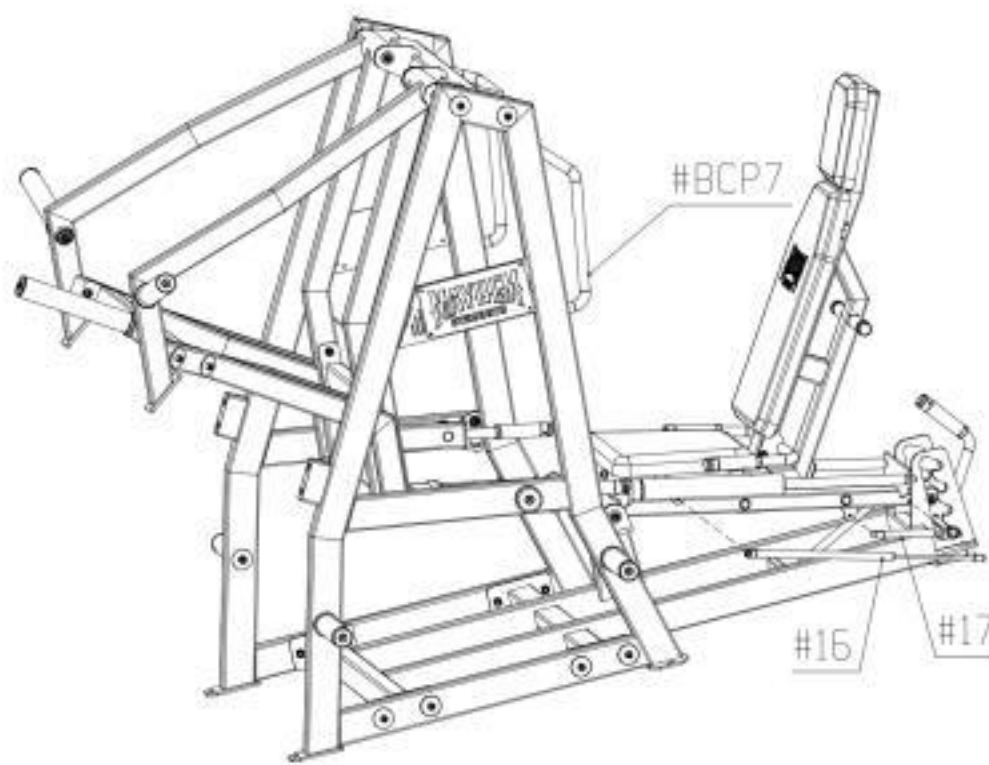
Step 6:Use following method
combine step5 frame、#14:
• 4xHexagon countersunk
head screws M8*16 (#54)



Step 7:Use following method
combine step6 frame、#15:

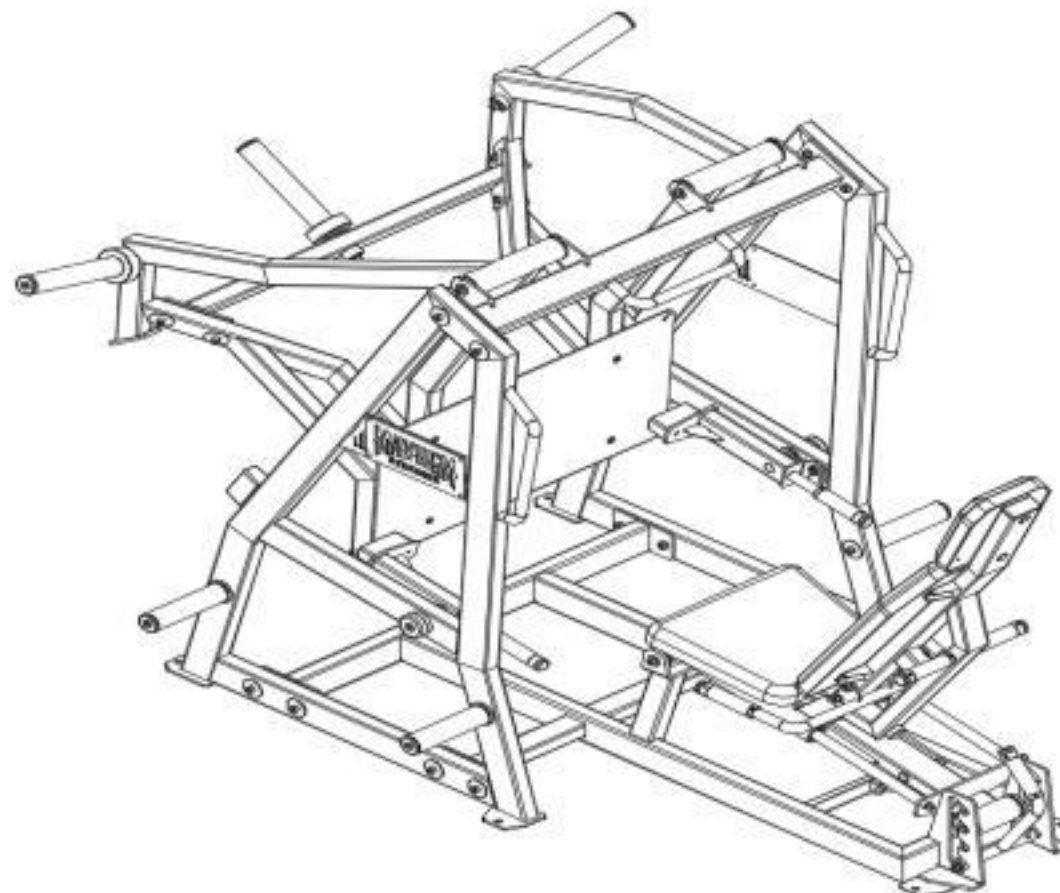


Step 8:Use following method
combine step7 frame、#16、#17:



Important Tips

Now that the Plate Loaded Leg
press is assembled, you need
to take some time to make sure
your unit is horizontal and
vertical.



-4-

Please take the time to read these instructions
carefully before installation. Please refer to the
list in the manual to confirm the completeness and
quantity of all parts (if any parts are missing or
damaged in transit, please call our company
immediately for after-sales instructions) When
installing the equipment, please follow the
instructions for proper installation.

This equipment is designed to provide the most
fluid and effective exercise training. After
installation, you need to understand all the
functions in order to use correctly, the use of the
process found in the problem should immediately stop
using to avoid physical injury and equipment damage.
And timely reference to the relevant instructions to
inquire about the cause, if you can not solve please
call the company after-sales. After carefully
reading all the instructions, please continue

Tools	Rubber Rod
	Level Ruler
	Hexagonal wrench
	Spring Clamp
	Adjustable wrench

Note: When assembling, it is recommended that two or
more
people operate

-2-

Accessories List

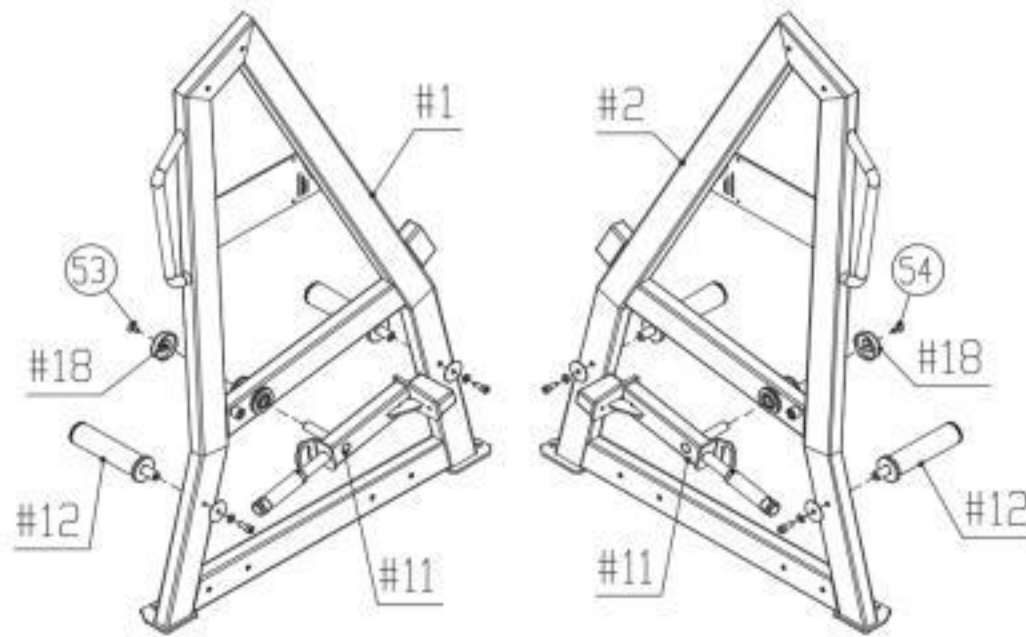
NO.	Name	Picture	QTY	NO.	Name	Picture	QTY
1	#1		1	8	#8		1
2	#2		1	9	#9		1
3	#3		1	10	#10		1
4	#4		1	11	#11		2
5	#5		1	12	#12		2
6	#6		1	13	#13		3
7	#7		1	14	#14		1

NO.	Name	QTY	NO.	Name	QTY
15	Hydraulic piston -280N-125	1	53	Hexagon countersunk head screws M10*20	2
16	Hydraulic piston -100N-220	1	54	Hexagon countersunk head screws M8*16	4
17	Hydraulic piston -80N-90	1	55	Flat Washers M10- D50	24
18	NO. 60 Aluminum end cap	2	56	Flat Washers M10- D20	28
51	Hexagon socket head screws M10*60	24	57	spring Washers M10	4
52	Hexagon socket head screws M10*25	4	58	Hexagonal self- locking nut M10	24

NOTE: Pre-assembled parts are not listed in this table.

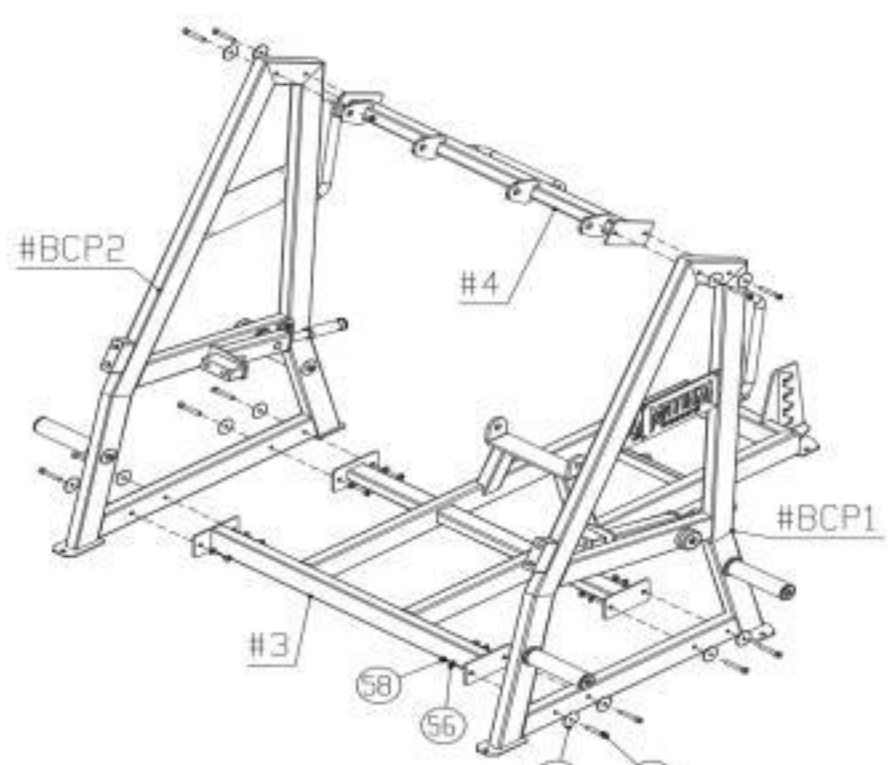
-5-

Step 1:Use following method combine#1、#11、#12、#18:
• 1xHexagon countersunk head
screws M10*20 (#53)

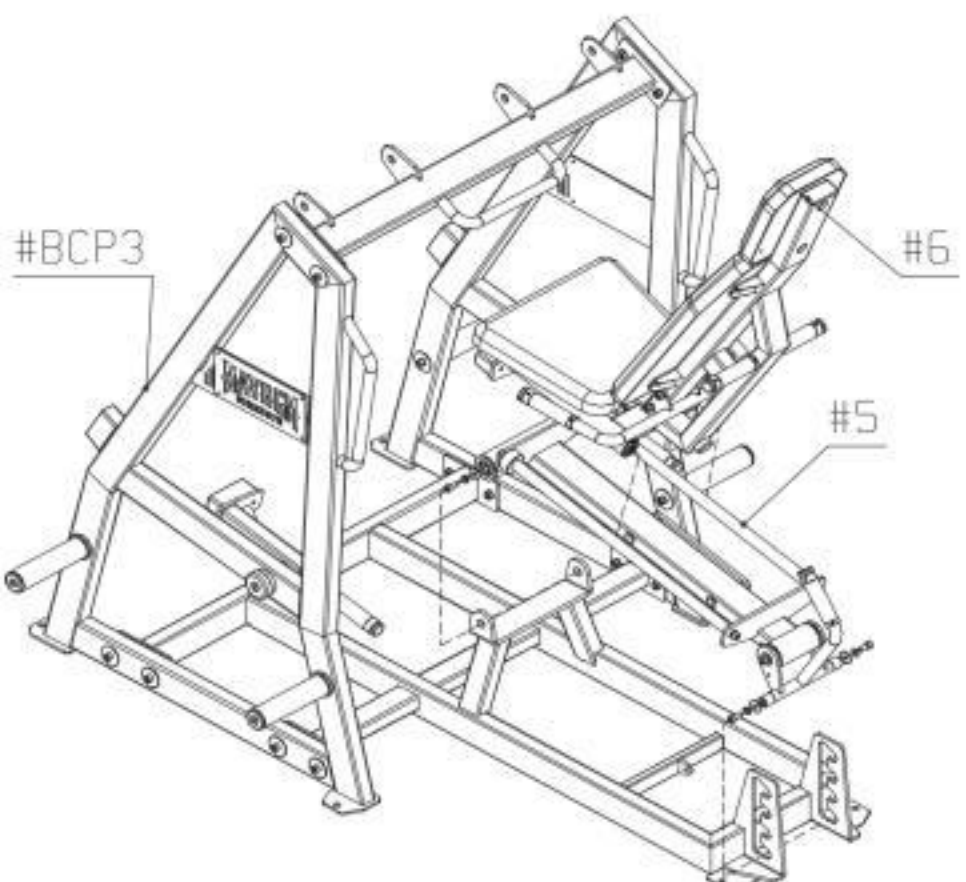


Step 2:Use following method
combine#2、#11、#12、#18:
• 1xHexagon countersunk
head screws M10*20 (#53)

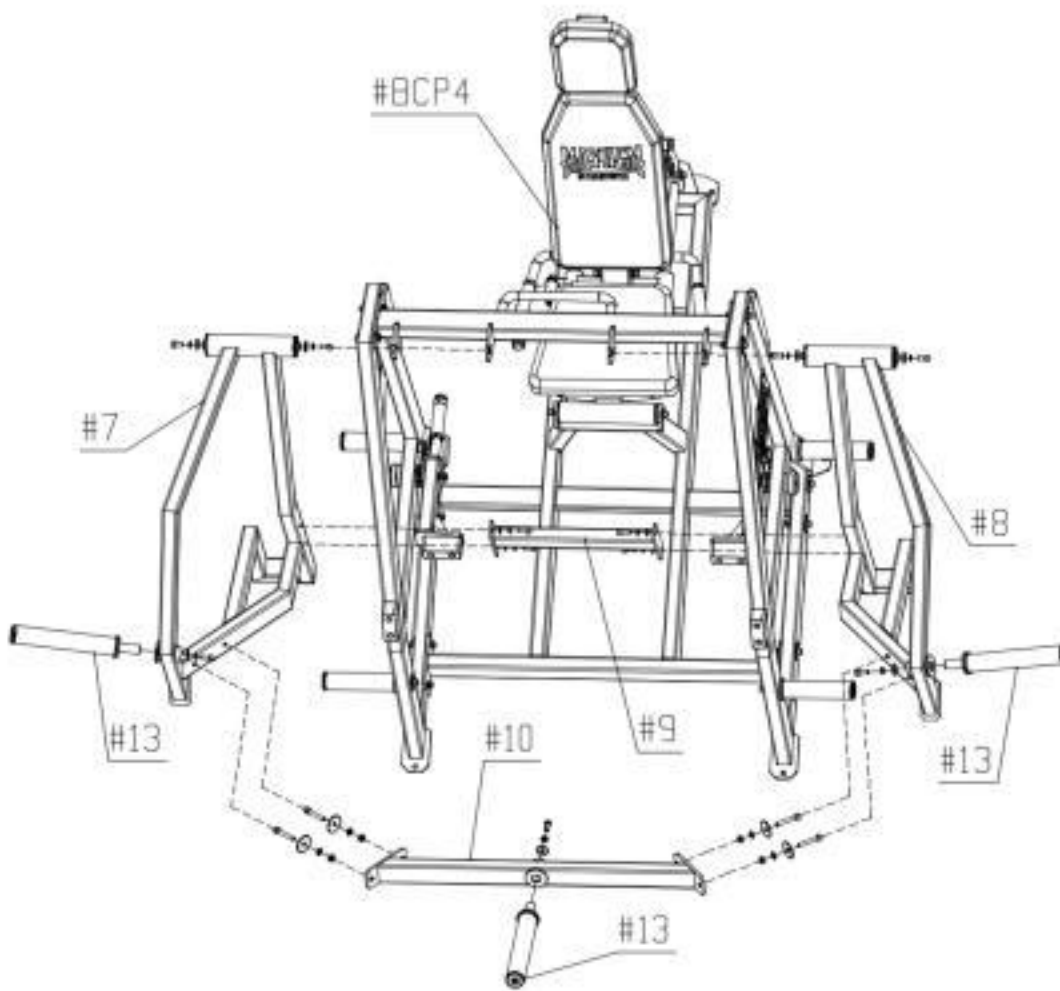
Step 3:Use following method combine
step1 frame, step2 frame、#3、#4:
• 12xHexagon socket head
screws M10*60 (#51)
• 12x Flat Washers M10-D50 (#55)
• 12x Flat Washers M10-D20 (#56)
• 12xHexagonal self-locking
nut M10 (#58)



Step 4:Use following method
combine step3 frame、#5、#6:



Step 5:Use following method
combine step4 frame、#7、#8、
#9、#10、#13;
• 12xHexagon socket head
screws M10*60 (#51)
• 12x Flat Washers
M10-D50 (#55)
• 12x Flat Washers
M10-D20 (#56)
• 12x Hexagonal
self-locking nut M10 (#58)
• 4xHexagon socket head
screws M10*25 (#52)
• 4x spring Washers M10 (#57)
• 4x Flat Washers M10-D20 (#56)



-3-